

Manhattan

New York



Cleveland

Ohio





MS906-P
Glass Clamp - 25.4mm



MS905-P
Wall Clamp - 25.4mm



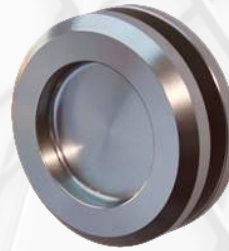
MS921-P
Wall Pipe Clamp - 25.4mm



MS916-P
Door Stop - 25.4mm



HC-720
Recessed door handle - 304ss



HC-710
Recessed door handle - 304ss



HE-501
Floor guide



MSL-02
Glass to Glass Hook Lock



MSL-01
Glass to Glass Overlap Lock Set



MS902-P
Glass Hanger



MSL-03
Glass to Wall Hook Lock



MS920-P
Pipe End Cap - 25.4mm



MS25.4
Ø25.4 Stainless Steel Tube - 2m long

NEW YORK SLIDER - SATIN



MS906-MB
Glass Clamp - 25.4mm



MS905-MB
Wall Clamp - 25.4mm



MS921-MB
Wall Pipe Clamp - 25.4mm



MS916-MB
Door Stop - 25.4mm



HE-501-MB
Floor guide



HC-710-MB
Recessed door handle



MS902-MB
Glass Hanger



CHA001-MB
12.7x12.7 Black Channel

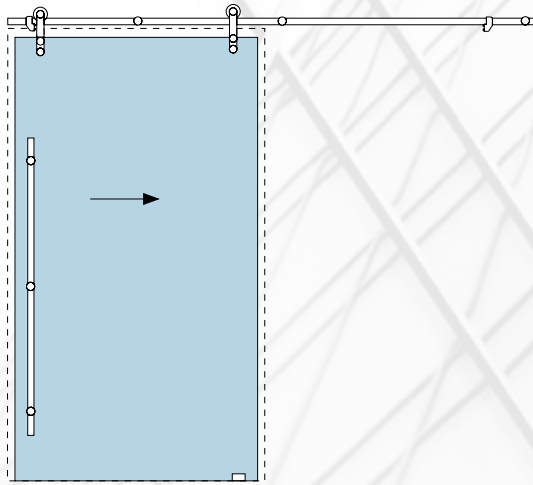
CHA002-MB
15.8x15.8 Black Channel



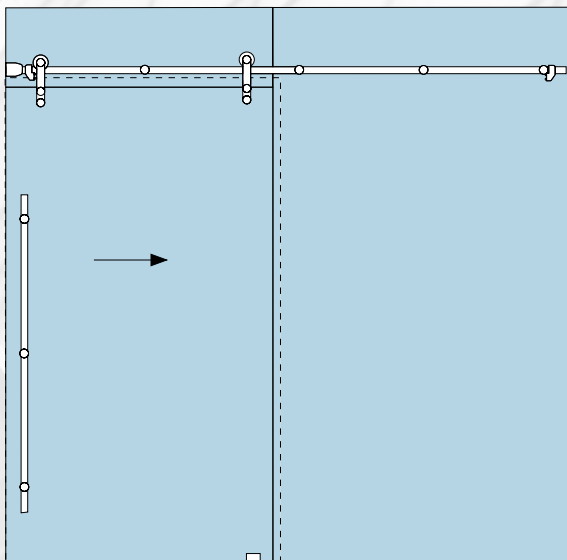
MS25.4-MB
Ø25.4 Stainless Steel Tube - 2m long



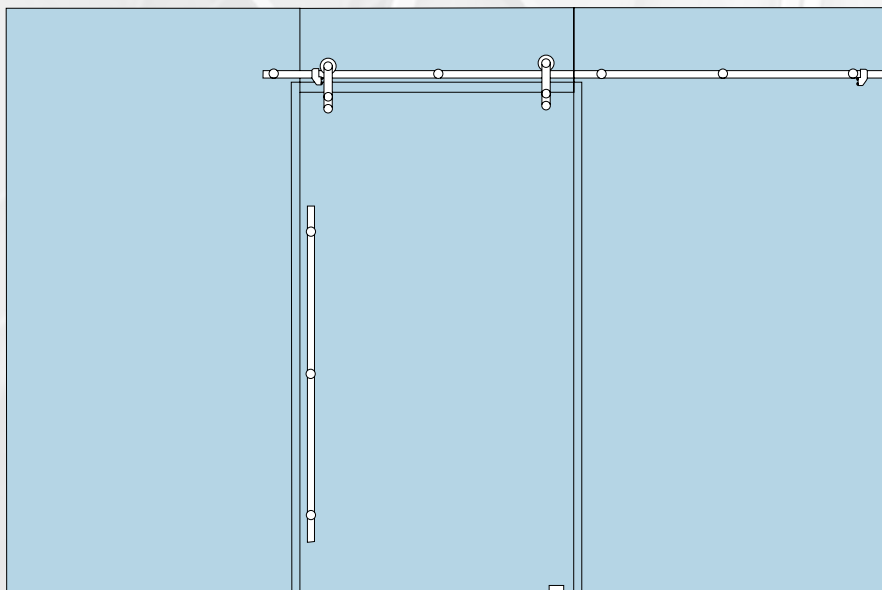
MS920-MB
Pipe End Cap - 25.4mm



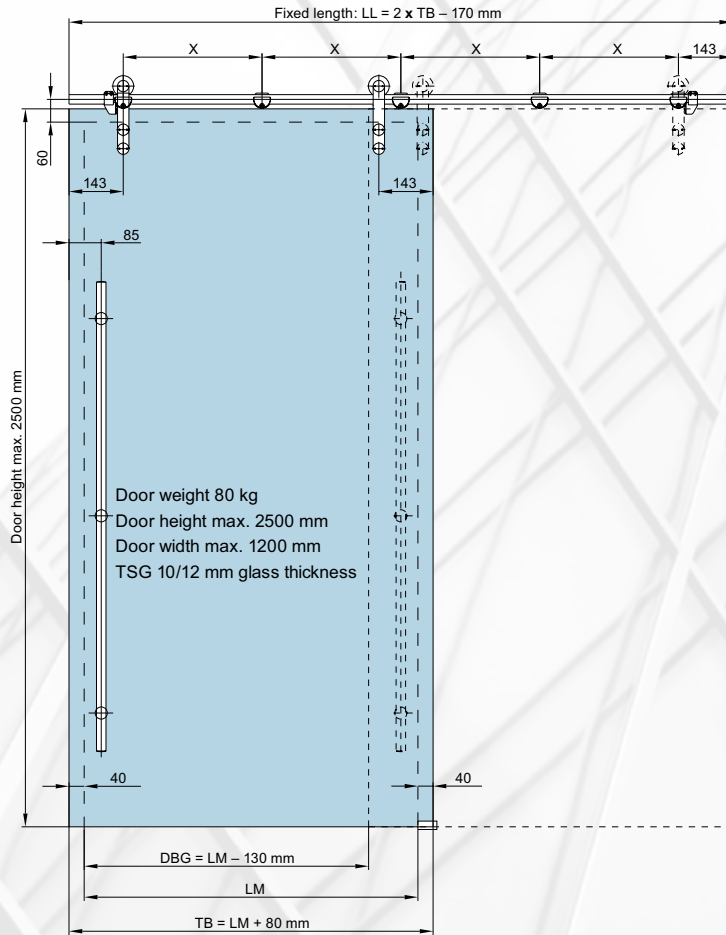
SINGLE DOOR FIXED TO WALL



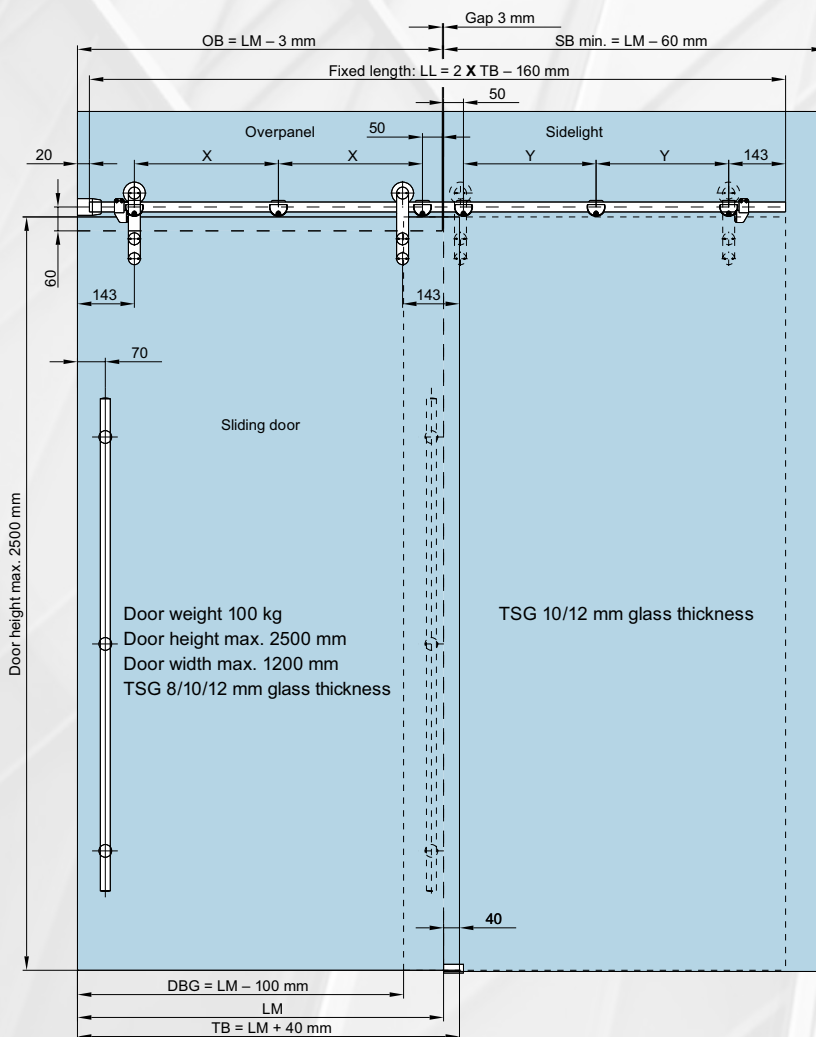
DOOR, PANEL AND FANLIGHT FIXED INSIDE REVEAL



DOOR, PANELS AND FANLIGHT FIXED INSIDE REVEAL

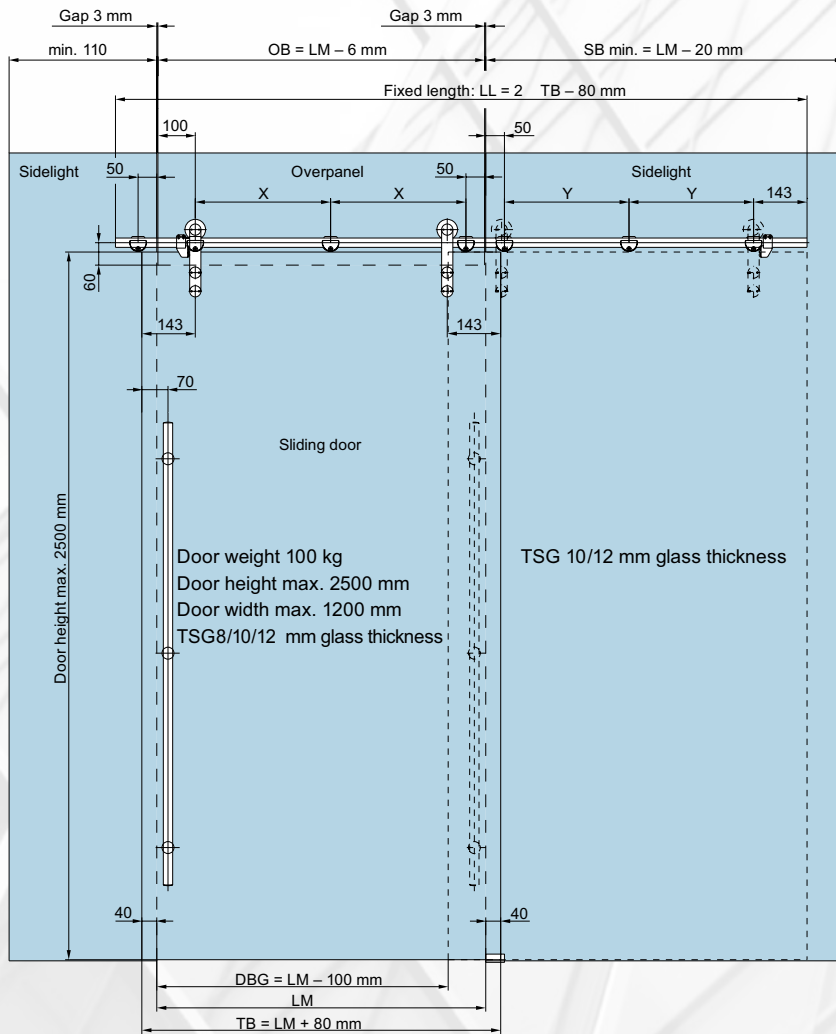


- LM = Daylight opening
- TB = Door width
- DGB = Entry width
- LL = Tubular track length
- X = Distance of single-point fixings $(LM - 148)/2$



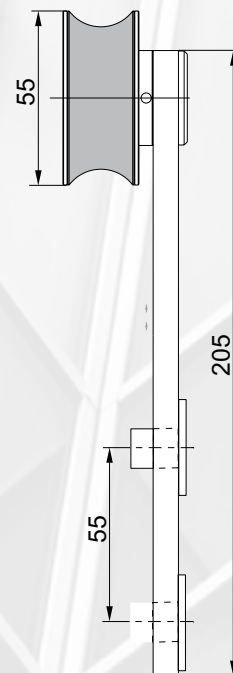
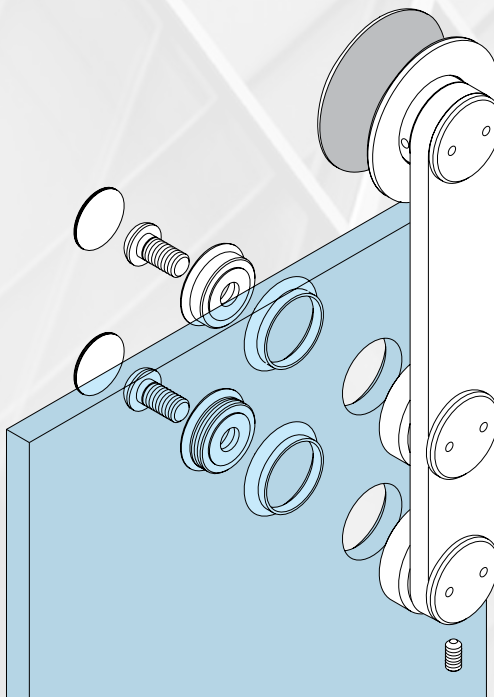
- LM = Daylight opening
- TB = Door width
- DGB = Entry width
- SBmin. = min. Seitenteilbreite
- LL = Tubular track length
- X = Centre distance between single-point fixings overpanel $(OB - 193)/2$
- Y = Centre distance between single-point fixings sidelight $Y = X - 29$
- OB = Overpanel width

NEW YORK SLIDER - DEDUCTIONS



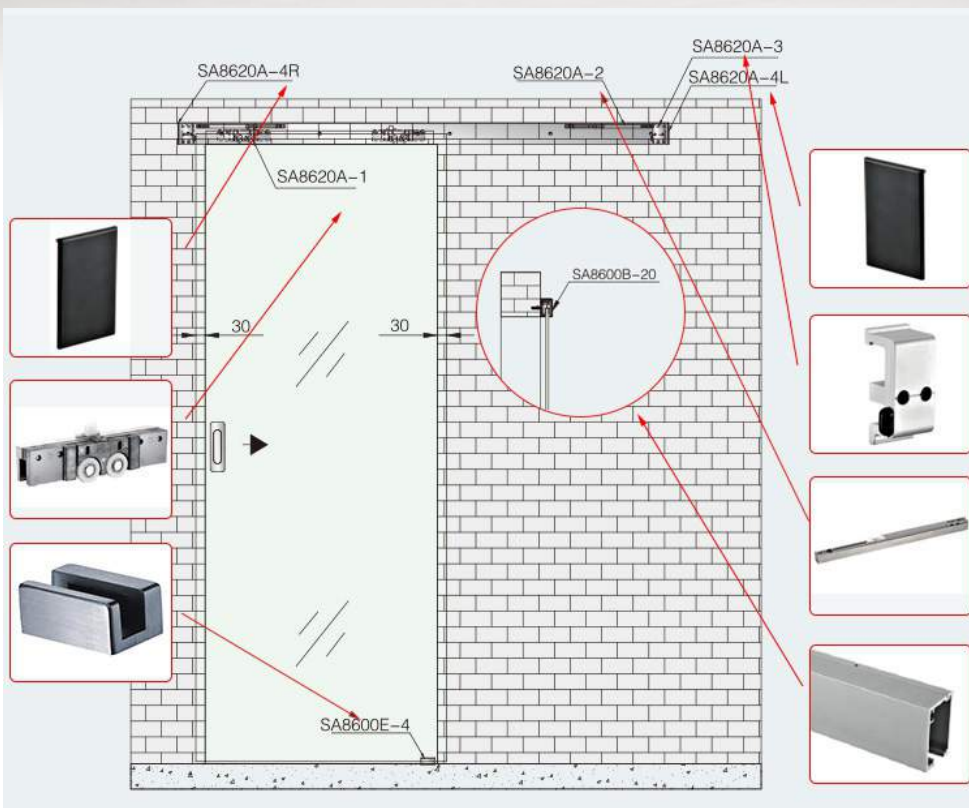
- LM = Daylight opening
- TB = Door width
- DGB = Entry width
- OB = Overpanel width
- SBmin. = min. Seitenteilbreite
- LL = Tubular track length
- X = Centre distance between single-point fixings overpanel
 $(OB - 150) / 2$
- Y = Centre distance between single-point fixings sidelight
 $Y = X - 29$

NEW YORK SLIDER - DEDUCTIONS



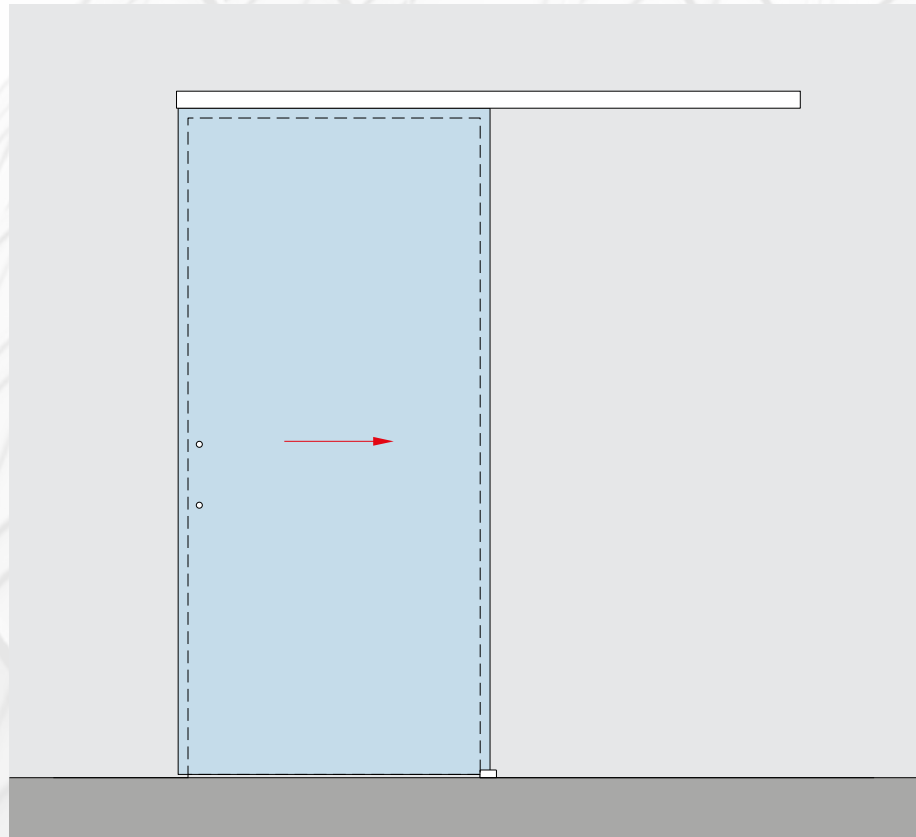
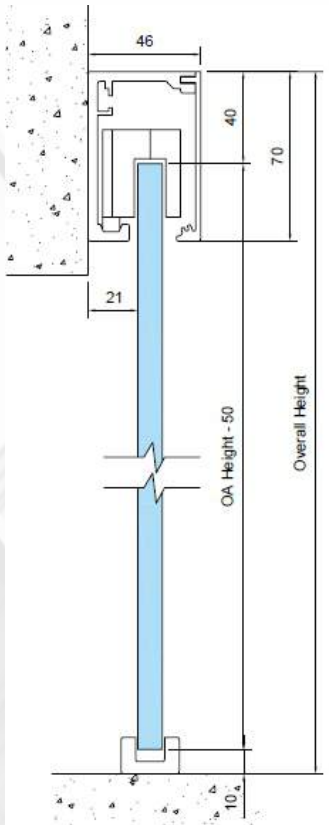


MANHATTAN SLIDER



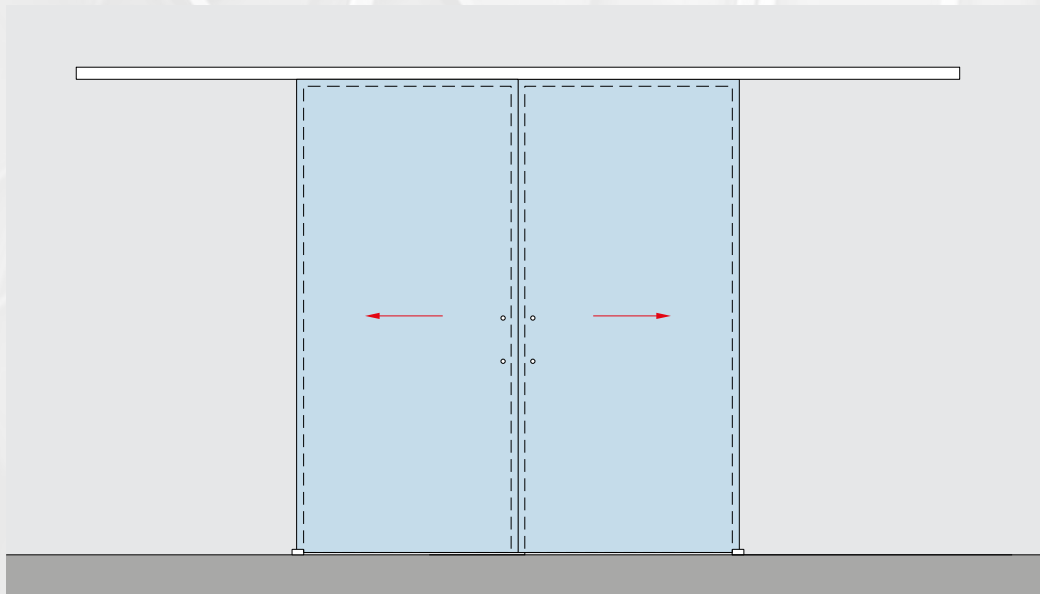
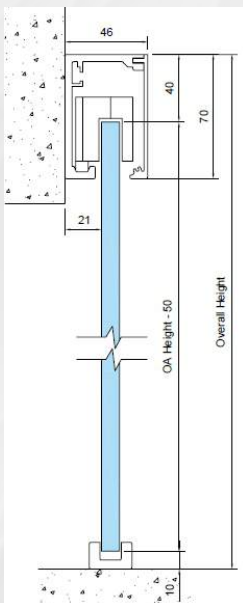
Single leaf fixed to outside of reveal

X



Double leaf fixed to outside of reveal

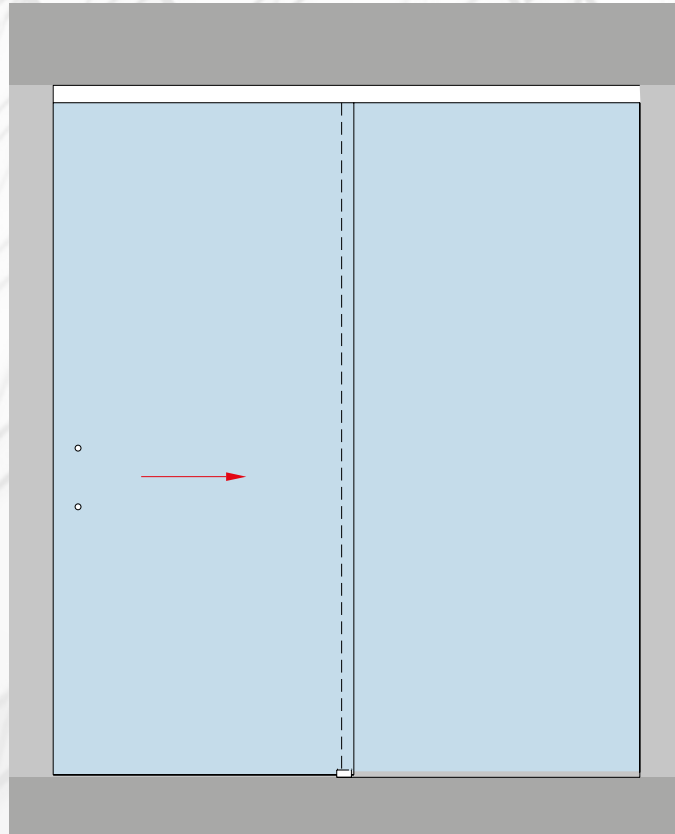
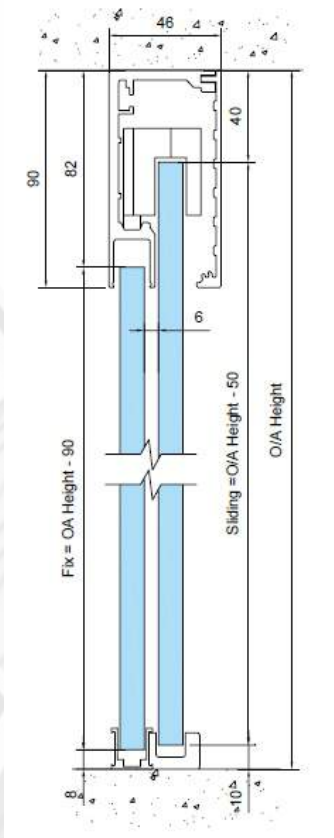
XX



MANHATTAN SLIDER - SYSTEM CONFIGURATIONS

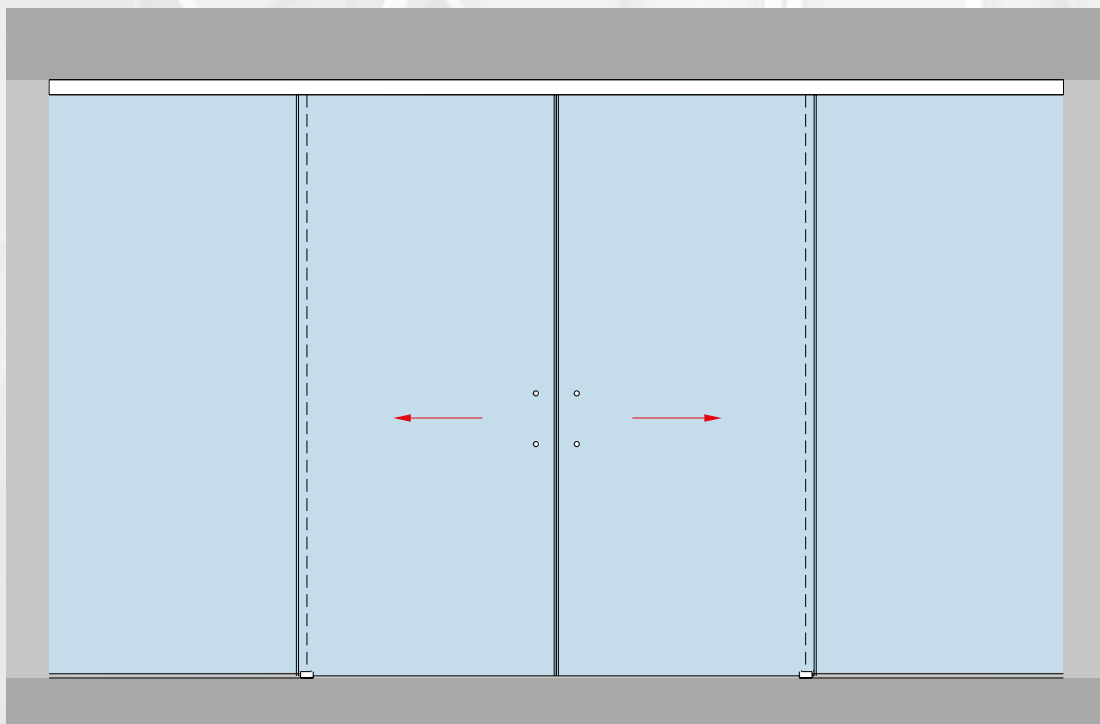
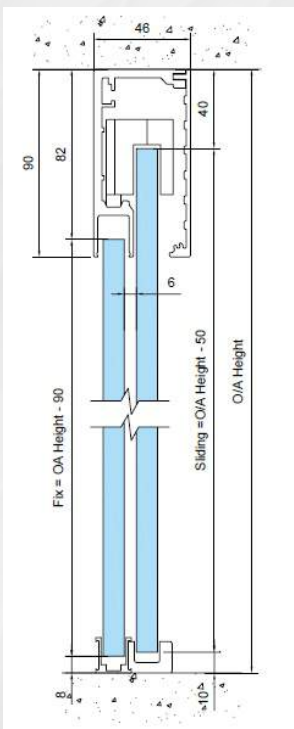
Single leaf sliding + Fixed pane to inside of reveal

XO



Double leaf sliding + 2x Fixed pane to inside of reveal

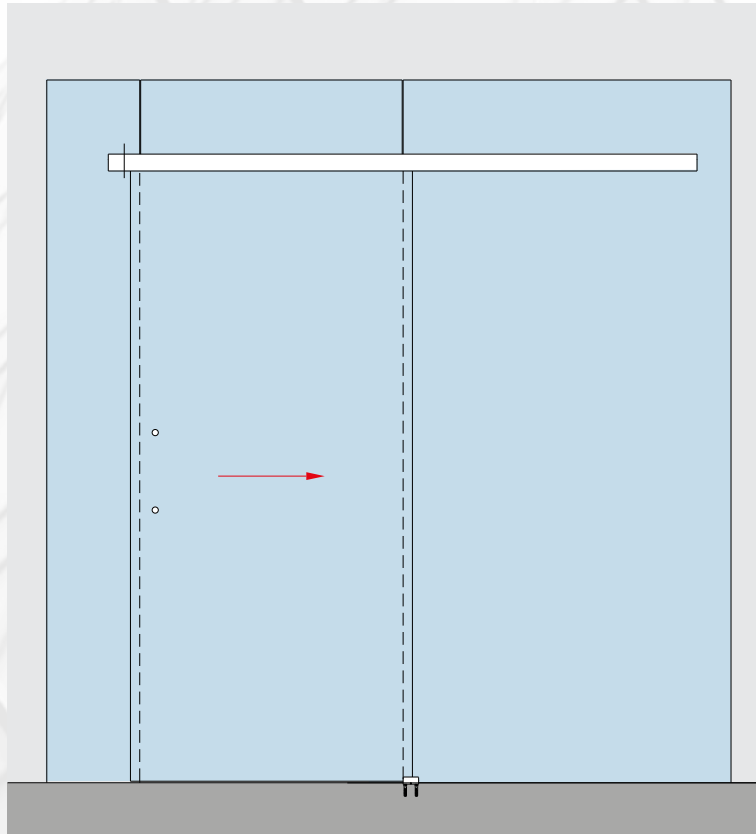
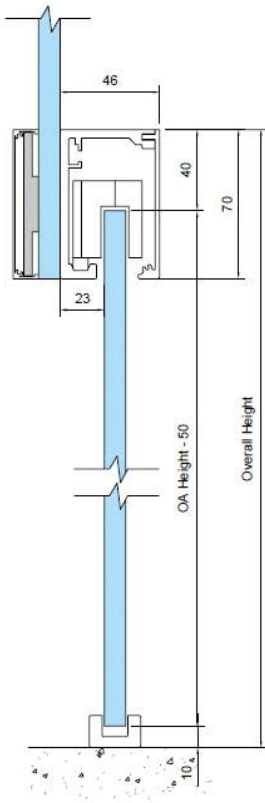
OXXO



MANHATTAN SLIDER - SYSTEM CONFIGURATIONS

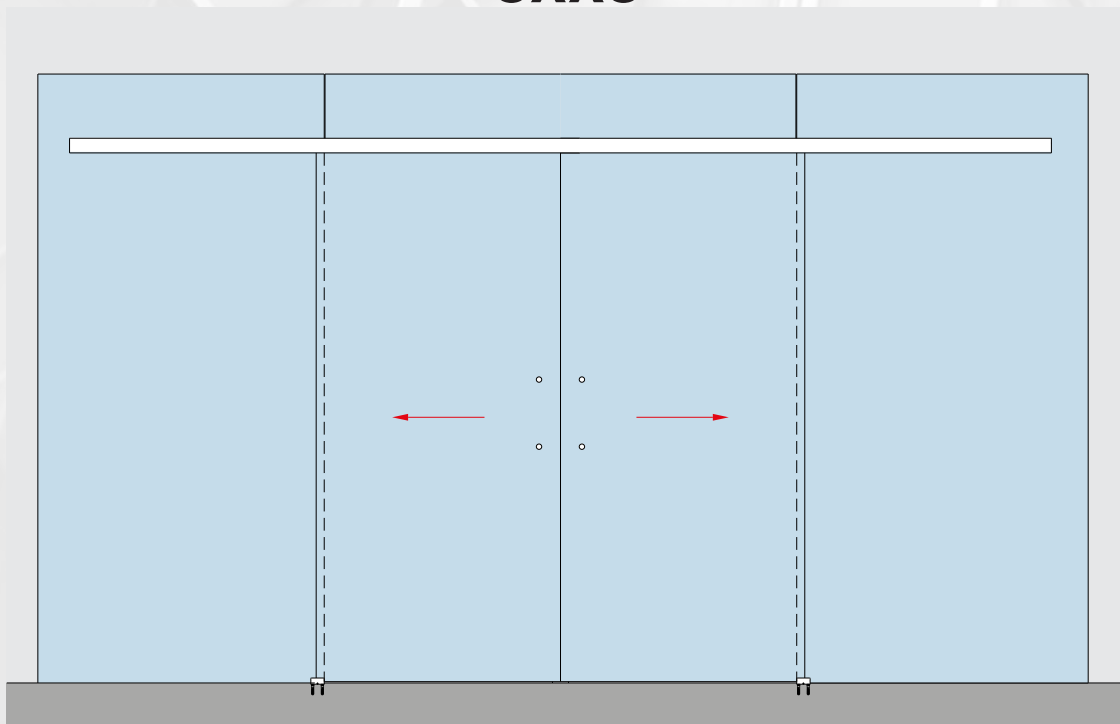
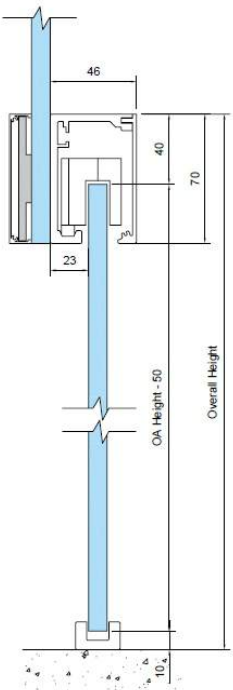
Single leaf sliding + Fixed pane to glass

XO

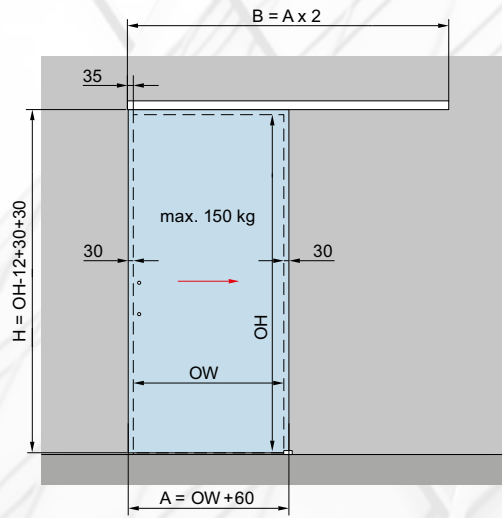


Double leaf sliding + 2x Fixed panes to glass

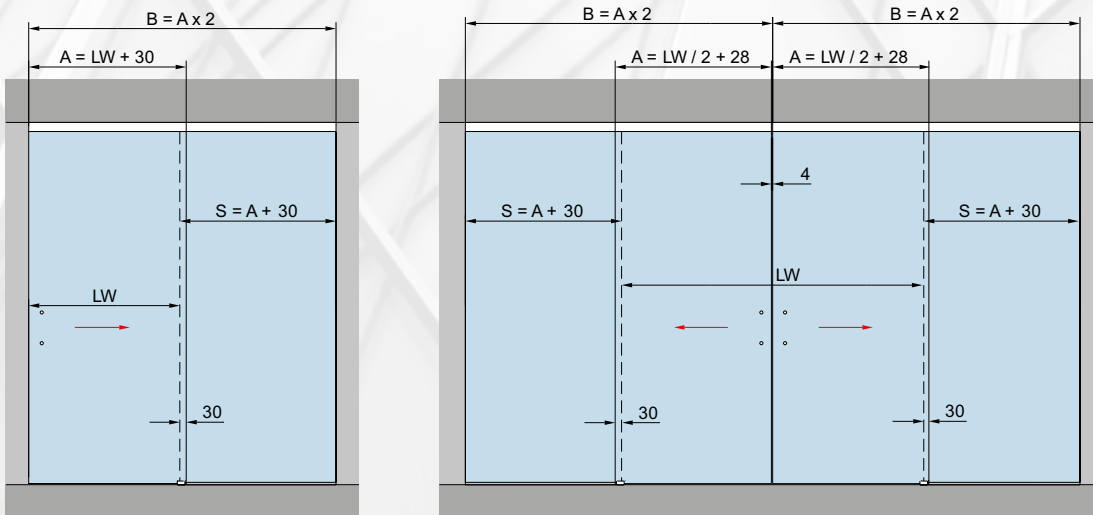
OXXO



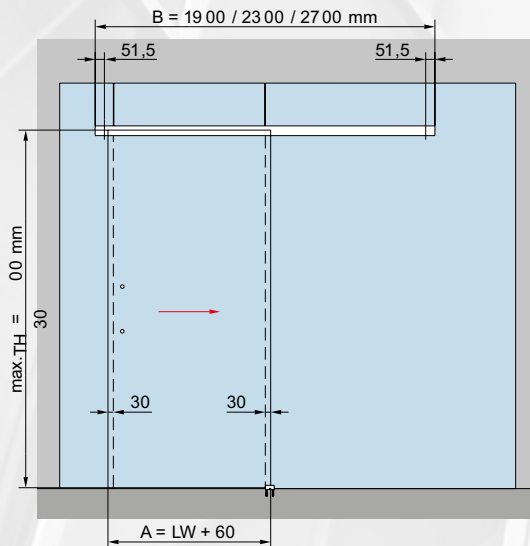
MANHATTAN SLIDER - SYSTEM CONFIGURATIONS



Wall/Side Hung



Soffit/Top Hung



Glass Hung

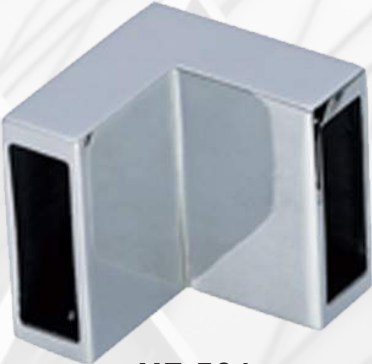




HF-503
Glass to track support - 304ss



HF-102
Sliding roller - 304ss



HF-501
Elbow connector



HF-502
Wall to track support - 304ss



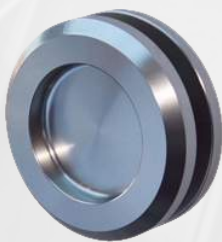
HF-608
Stopper



HC-720
Recessed door handle - 304ss



HF-401
30x10mm Rectangular track - 304ss



HC-710
Recessed door handle - 304ss



HF-201
Glass to track support - 304ss



HE-501
Floor guide

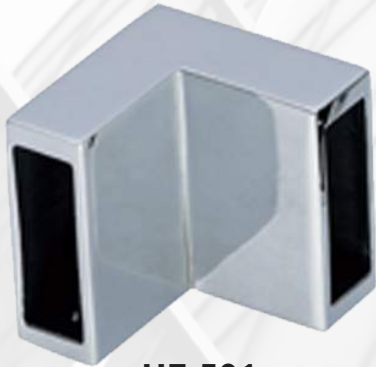




HF-503
Glass to track support - 304ss



HF-103
Slider roller on glass



HF-501
Elbow connector



HF-502
Wall to track support - 304ss



HF-202
Anti-lift pin



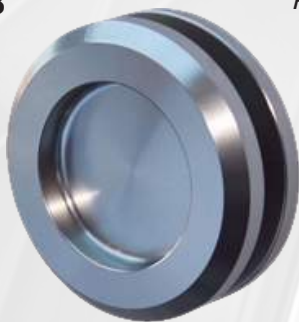
HF-608
Stopper



HC-720
Recessed door handle - 304ss



HF-401
30x10mm Rectangular track - 304ss



HC-710
Recessed door handle - 304ss

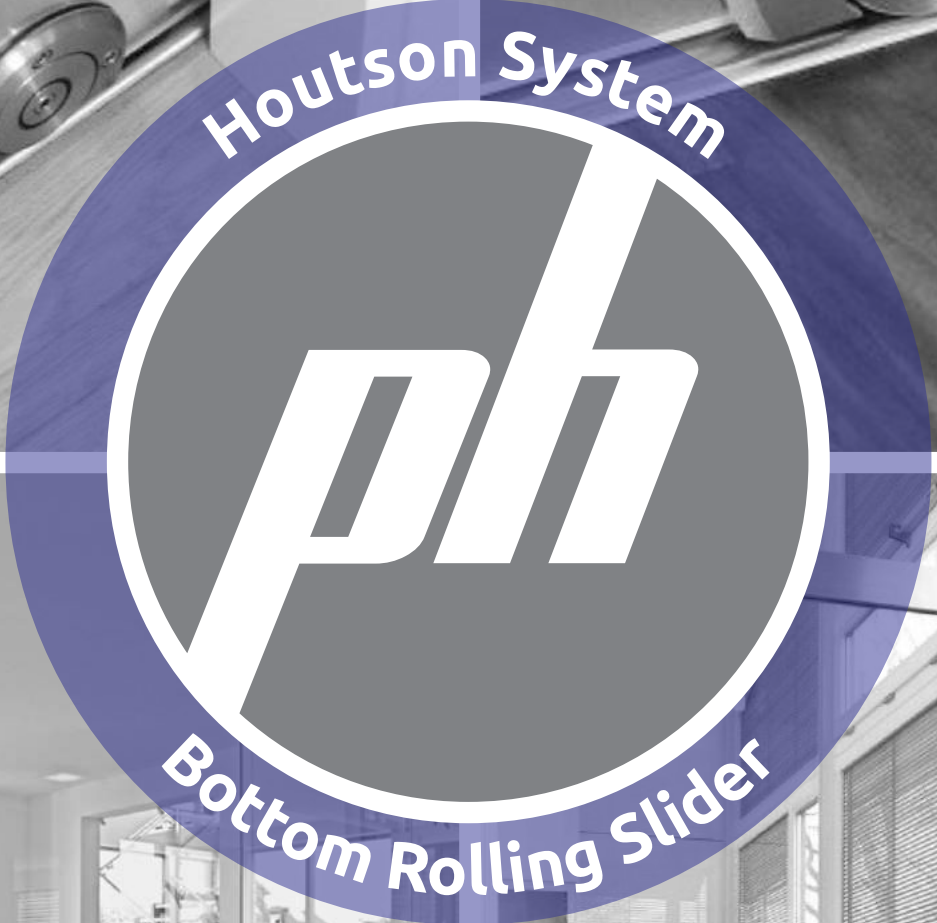


HF-201
Glass to track support - 304ss



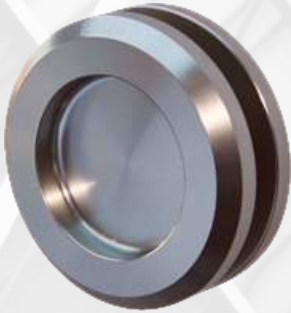
HE-501
Floor guide

CLEVELAND SLIDER





SW-101
Houston Sliding Door Wheel - 304ss



HC-710
Recessed door handle - 304ss



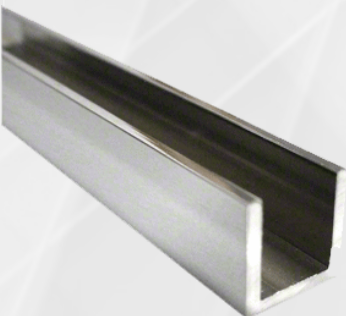
HC-720
Recessed door handle - 304ss



HOUSTON SLIDER



TSS101
Damp Strip - half moon



CHA002-P
15.8x15.8 Polished Channel

TH300-P
*Back to back T Handle - 300/32/200cc
(polished finish)*

TH400-S
*Back to back T Handle - 400/32/300cc
(polished finish with satin center)*

TH500-S
*Back to back T Handle - 500/32/350cc
(polished finish with satin center)*

TH500-P
*Back to back T Handle - 500/32/300cc
(polished finish)*

TH1200-P
*Back to back T Handle - 1200/32/900cc
(polished finish)*